



# Urgent

## Your Land, Your Rights

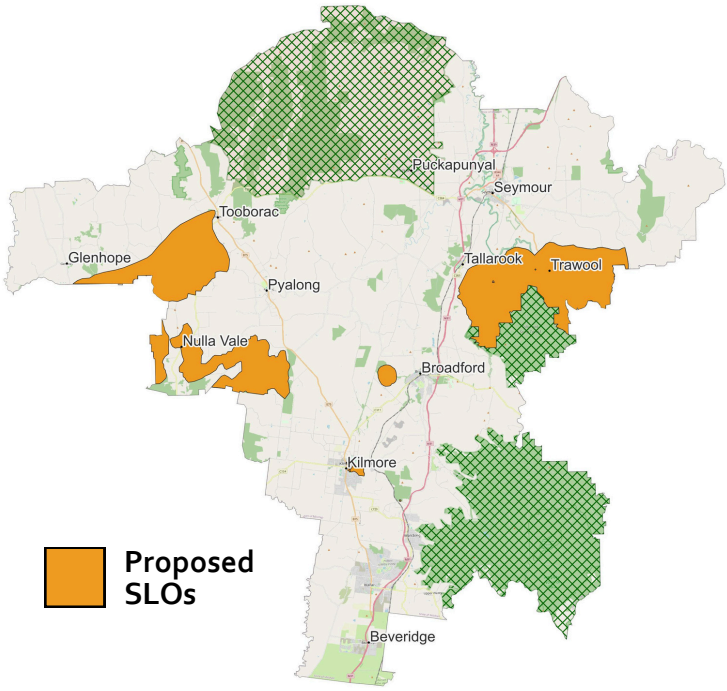
### Act Now!

### Mitchell Council Proposes To Adopt Significant Landscape Overlays

(SLOs) that will **drastically impact farming operations** and lead to the degradation of pastures. These changes will impose **severe restrictions on how you can use your land**, turning productive pastures and agricultural land into wastelands of scrub and regrowth.

### What Does This Mean For You?

- **A Permit will be required for ANY Native Vegetation Removal:** Despite Council's claim that another part of the Mitchell Planning Scheme provides an exemption, the new SLOs explicitly state that ***"a permit is required to remove, destroy, or lop any native vegetation"***, making it impossible to maintain pastures and even plough crops.
- **Loss of Farming Rights:** Almost the entirety of the proposed new SLO areas are presently zoned "Farming Zone" where farming is the dominant land use and agricultural activities should face as few restrictions as possible.
- **Increased Bureaucracy and Costs:** Navigating the permit process is a bureaucratic nightmare, involving extensive time, effort, and financial costs.



SLOs will cover almost **12% of Mitchell Shire** (excluding Puckapunyal Military Area, Kinglake National Park & Tallarook State Forest).

- **Discrimination and Unfair Disadvantage:** Properties under the SLO will face increased financial and operational disadvantages compared to those not affected by the SLO.



Act Now - Important Council Meeting on 19 August 2024

# Act Now

Before Important Council  
Meeting on 19 August 2024



## Write to Council

Let Mitchell Council know how the SLOs will affect you. Ask Councillors to vote against the proposal to implement the new SLOs.

Mitchell Councillors will be asked to approve a 'Landscape Assessment Study' recommending the introduction of the new SLOs at a council meeting on 19 August 2024.

Write to Council and express your concerns about the proposed SLOs.

For a guide for how to write to Council and what to include visit our website or email us at [fightback@farmprotect.org](mailto:fightback@farmprotect.org)

Sending an email can and does make a difference.



## Join Protect Our Farms

Become a member (free)

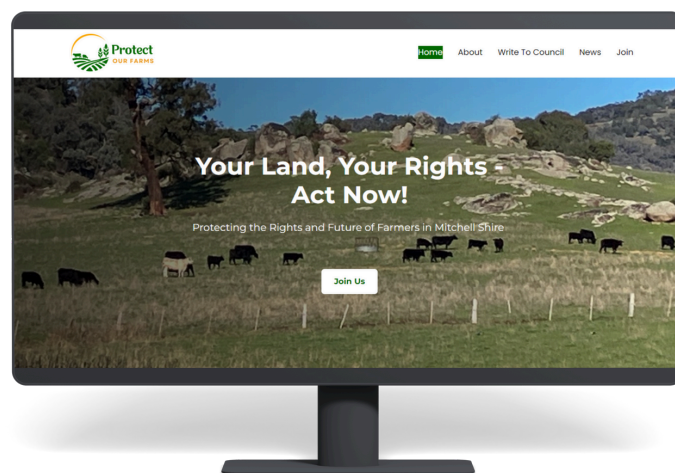
Protect Our Farms Incorporated is a community led association formed to fight against Mitchell Council's proposed new SLOs which will lead to loss of our farming rights.

Visit our website to join. Your membership ensures your voice is heard and demonstrates our united approach and strength of numbers. We will keep you informed with the latest information.



## Learn More

[www.farmprotect.org](http://www.farmprotect.org)



**Don't let misguided policies destroy our agricultural future.  
Act now to protect your land, your livelihood and your land values!**



Protect Our Farms Incorporated  
[www.farmprotect.org](http://www.farmprotect.org)  
[fightback@farmprotect.org](mailto:fightback@farmprotect.org)